

---

# MOVE LT AUDITOR+ DATABASE TO ANOTHER SQL SERVER

---

LT Auditor+

Table of Contents

Introduction ..... 2

Process Summary..... 2

    Step 1 – Stopping LT Auditor+ Services..... 2

    Step 2 – Detach database from current server ..... 3

    Step 3 – Attach database on new Microsoft SQL Server..... 4

    Step 4 - Configure the LT Auditor+ Manager to point to the new LT Auditor+ database ..... 5

    Step 5 - Configure scheduled reports to run from the new database. .... 6

    Step 6 - Restart LT Auditor+ service on all LT Auditor+ Manager machines ..... 7

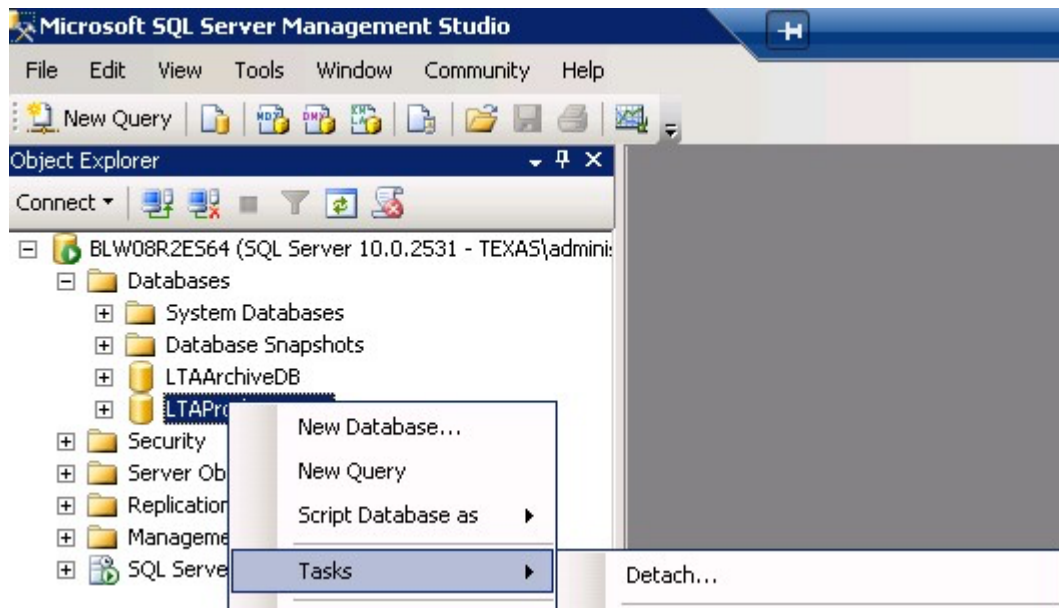
    Step 7 – Change Server Name for Management and Reporting Consoles..... 7

    Step 8 – Setup database archiving and deletion jobs. .... 8



## Step 2 – Detach database from current server

1. Run the Microsoft Management Studio to access the current database server and detach the database as shown below. In this example we will call the database LTAProductionDB.



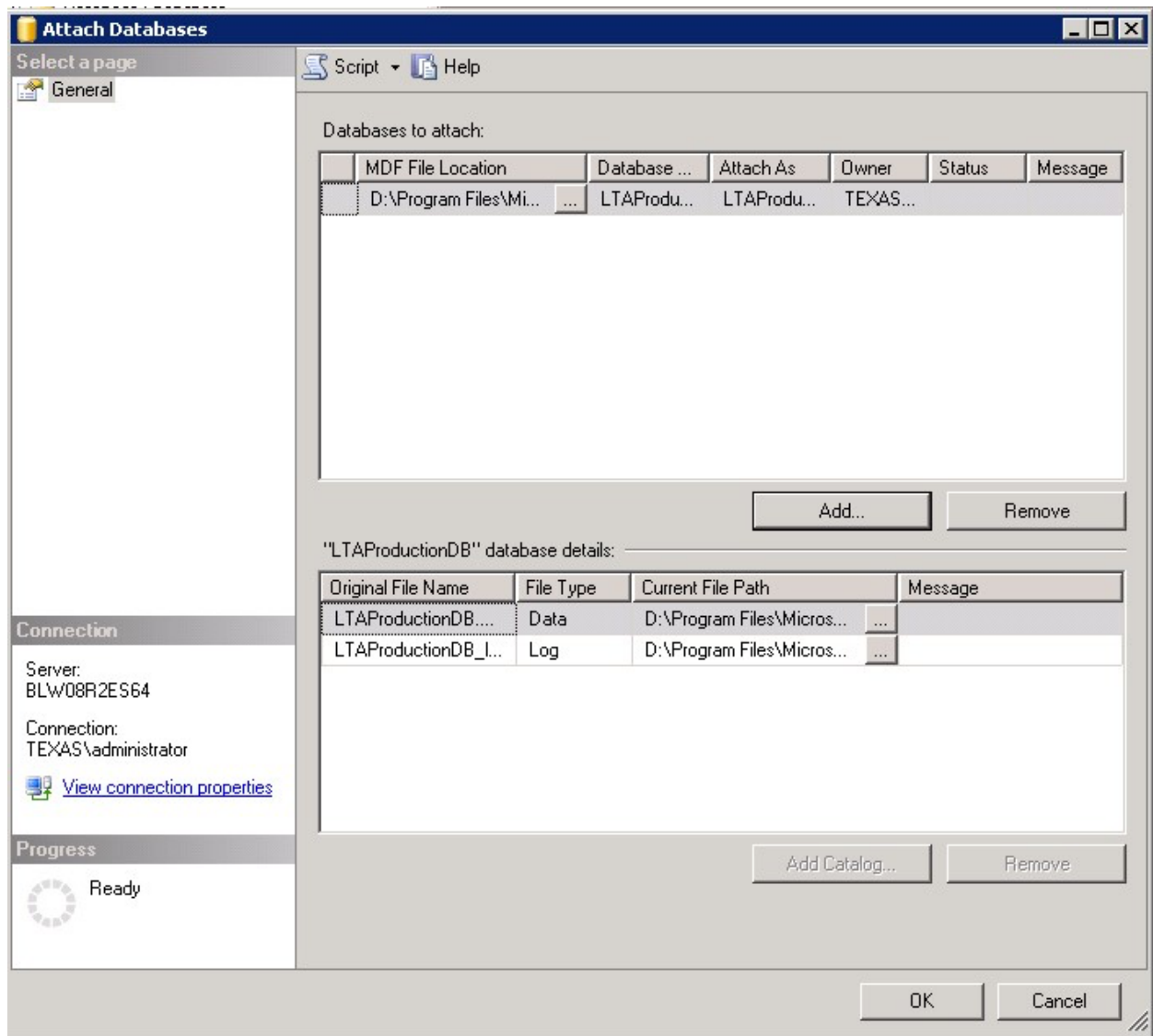
2. Once the database is detached you can safely copy the files associated with the database to the new location that hosts the new database server. The files will have the extensions .MDF and(or) .LDF as shown below:

name	Date modified	Type	Size
LTAArchiveDB.mdf	9/23/2011 6:27 PM	SQL Server Databa...	3,328 KB
LTAArchiveDB_log.LDF	9/23/2011 6:27 PM	SQL Server Databa...	3,840 KB
LTAArchiveDB06.mdf	5/10/2011 9:55 AM	SQL Server Databa...	3,328 KB
LTAProductionDB.mdf	9/29/2011 8:37 AM	SQL Server Databa...	13,568 KB
LTAProductionDB_log.LDF	9/23/2011 6:27 PM	SQL Server Databa...	10,176 KB

3. LT Auditor+ database files can grow very large and please ensure there is sufficient drive space on new SQL server. It can take a very long time to copy a large file so plan accordingly.

## Step 3 – Attach database on new Microsoft SQL Server

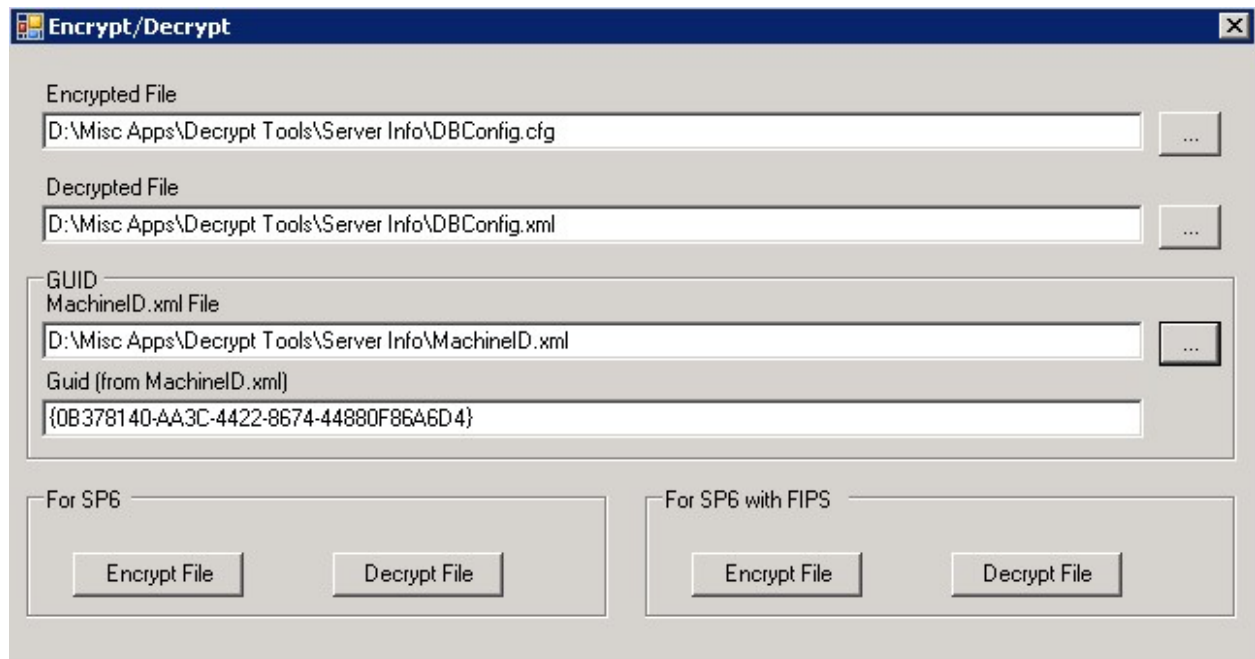
1. Once both \*.MDF and(or) \*.LDF files are copied they can be reattached to new SQL Server as shown below using Management Studio for SQL Server.



## Step 4 - Configure the LT Auditor+ Manager to point to the new LT Auditor+ database

Due to security reasons moving a database would require a tool/utility from Blue Lance, to decrypt and encrypt configuration files that connect the LT Auditor+ Manager to the database. Please call or email your Blue Lance support to request for the Decrypt-Encrypt tool. This utility can only be released to authorized personnel within the company.

1. Copy the following files from the folder '*Program Files\Blue Lance, Inc\LT Auditor+\Security Management Framework\Config\*' to a temporary folder:
  - "MachineID.xml
  - DBConfig.cfg"
2. Run the Encrypt-Decrypt tool and select the files as shown below:



3. Click on *Decrypt File* and you will see file called DBConfig.xml. Open the file using notepad and make the changes highlighted below to put the parameters for the new Microsoft SQL Server.

```
<MSSQL>
  <ServerName>NewSQLServer/ServerName>
  <Database>LTProductionDB</Database>
  <ConnectionType>0</ConnectionType>
  <UserName />LTADBUser
  <Password />MySecurePassword
</MSSQL>
```

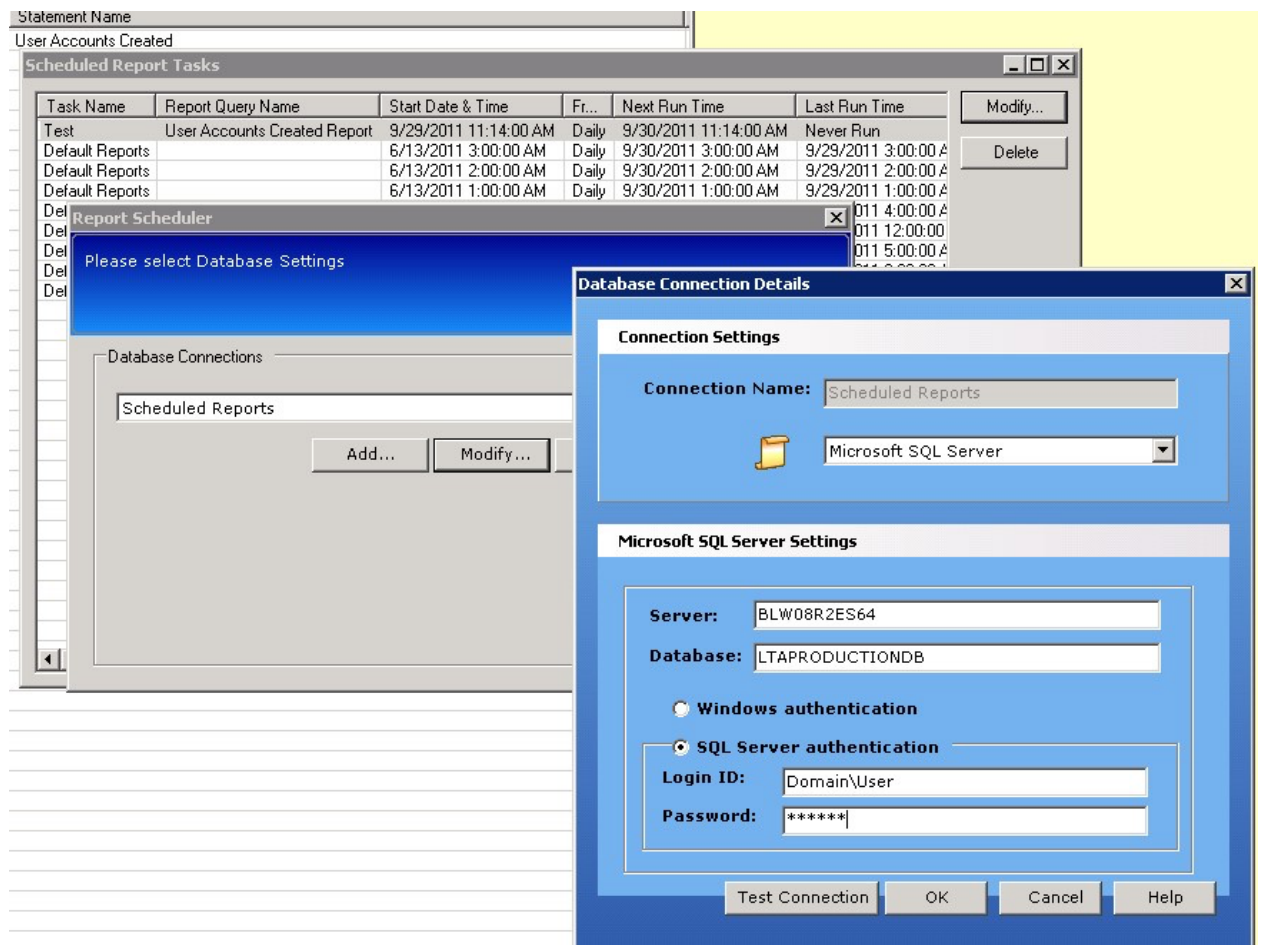
Note: if you use Microsoft SQL Server authentication, you won't see a UserName or Password.

- Once you make the changes, click on Encrypt button and copy the two files back to the '*Program Files\Blue Lance, Inc\LT Auditor+\Security Management Framework\Config\*' folder.
- Please delete the file DBConfig.xml for security reasons.

## Step 5 - Configure scheduled reports to run from the new database.

If you have scheduled reports, you will need to change\modify the database settings to ensure that all scheduled jobs can run.

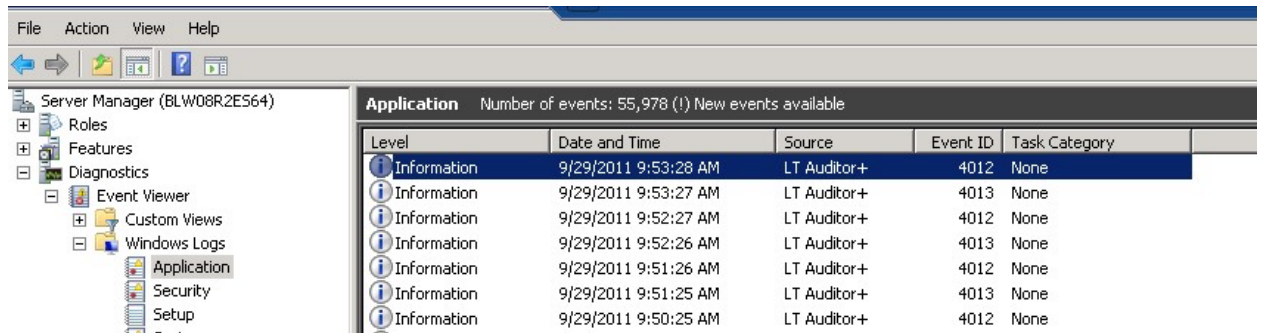
- Highlight a scheduled report and click on Modify.
- Select the Database Connection profile and modify the database credentials to connect to the new database.



- If all scheduled jobs use the same profile no more changes are needed otherwise make the changes on all profiles.

## Step 6 - Restart LT Auditor+ service on all LT Auditor+ Manager machines

1. Start the LT Auditor+ service on the LT Auditor+ Manager.
2. Monitor the Windows application log for events 4013 and 4012 to ensure that audit data is rolling up into the database. Rollup typically takes place every 15 minutes.

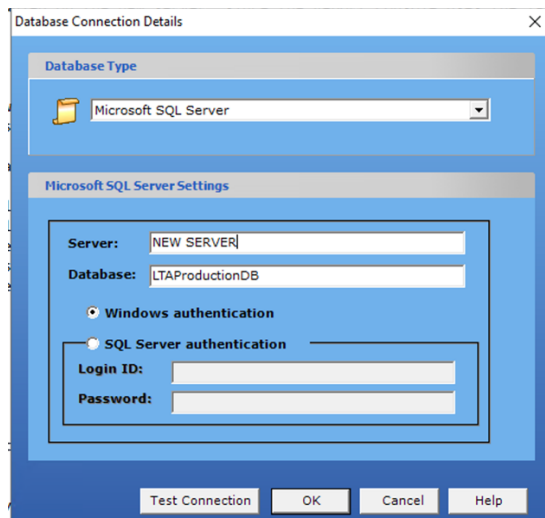


The screenshot shows the Windows Event Viewer interface. The left pane displays the tree structure with 'Application' selected under 'Server Manager (BLW08R2E564)'. The right pane shows a list of events with the following columns: Level, Date and Time, Source, Event ID, and Task Category.

Level	Date and Time	Source	Event ID	Task Category
Information	9/29/2011 9:53:28 AM	LT Auditor+	4012	None
Information	9/29/2011 9:53:27 AM	LT Auditor+	4013	None
Information	9/29/2011 9:52:27 AM	LT Auditor+	4012	None
Information	9/29/2011 9:52:26 AM	LT Auditor+	4013	None
Information	9/29/2011 9:51:26 AM	LT Auditor+	4012	None
Information	9/29/2011 9:51:25 AM	LT Auditor+	4013	None
Information	9/29/2011 9:50:25 AM	LT Auditor+	4012	None

## Step 7 - Change Server Name for Management and Reporting Consoles

When launching the Management Console or Reporting Console, make sure to enter the proper credentials to the new Microsoft SQL Server.



The screenshot shows the 'Database Connection Details' dialog box. It has two main sections: 'Database Type' and 'Microsoft SQL Server Settings'.

**Database Type:** A dropdown menu showing 'Microsoft SQL Server'.

**Microsoft SQL Server Settings:**

- Server:** A text box containing 'NEW SERVER'.
- Database:** A text box containing 'LTAProductionDB'.
- Authentication:** Two radio buttons are present. 'Windows authentication' is selected, and 'SQL Server authentication' is unselected.
- SQL Server authentication (disabled):** A group box containing 'Login ID:' and 'Password:' text boxes.

At the bottom, there are four buttons: 'Test Connection', 'OK', 'Cancel', and 'Help'.



## Step 8 – Setup database archiving and deletion jobs.

Create a new SQL job and setup the LT Auditor+ archiving and deletion job (LTAArchiveDB\_Job). Please ensure this job is configured similar to settings on the old SQL server.

